

# KEYFOB INSTRUCTIONS

**ADDING** A KEYFOB

## STEP 1

Push and hold the white operating button on the wall box for **5 seconds** until the **red LED** goes out

## STEP 2

Take the new Keyfob to be added and press the designated button once.

*Repeat for all keyfobs needing coding*

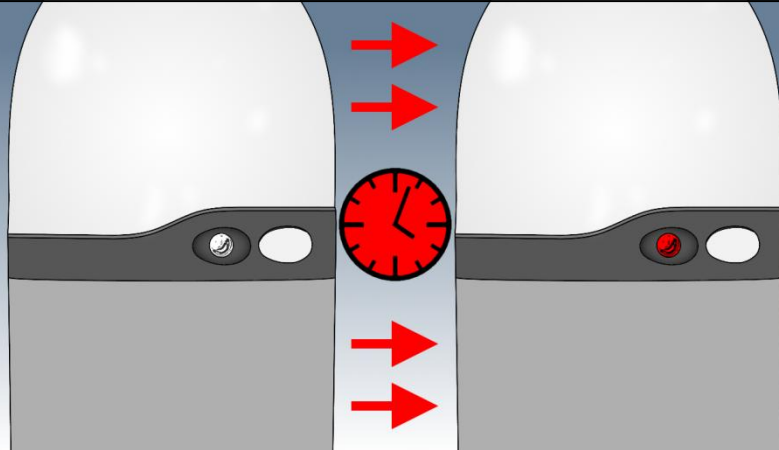
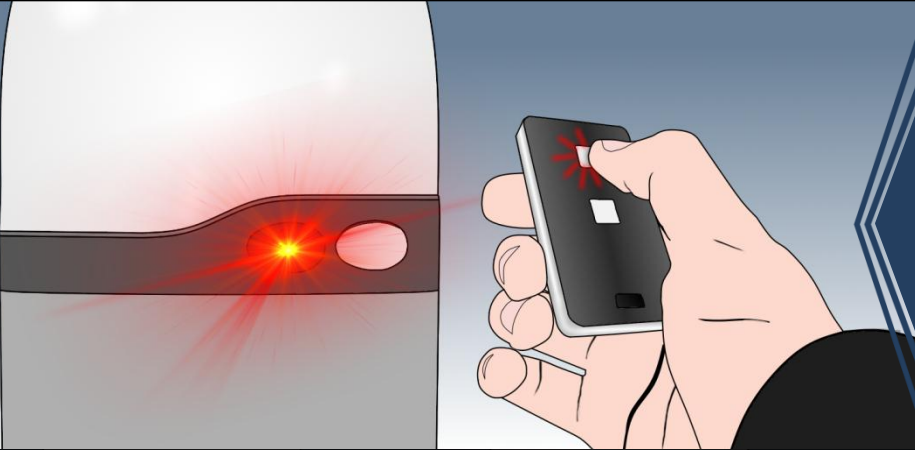
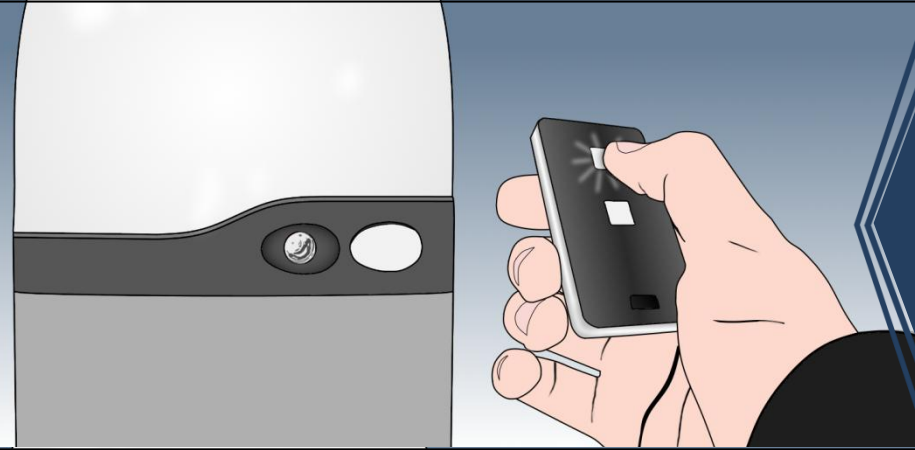
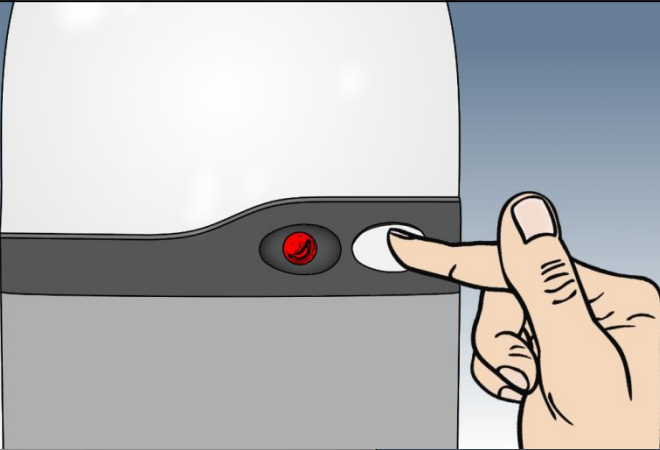
## STEP 3

The **red LED** indicator on the wall box will flash with each registered keyfob

## STEP 4

*Once added;*  
Wait one minute for the red LED indicator switches back to its normal state.

**The door is now ready for normal use.**



# KEYFOB INSTRUCTIONS

REMOVING A KOYFOB

## NOTICE

It is **NOT** possible to selectively delete access controllers. The only way to decode a keyfob is to completely remove coding for **ALL** linked fobs.

## STEP 1

Switch off the power supply to the unit and remove the front cover *via* the two fixing screws beneath the dark-grey bottom cover.

## STEP 2

Switch up the dip switch furthest to the right (Marked either 5 or 6) and then return power to the unit.

## STEP 3

Check that the **yellow radio set LED** illuminates for **5 seconds**. All transmitters are now deleted, switch the dip switch back down and **restart the power supply**.

